

CODIR

The FIDH Management Committee (Codir) is headed by the Chief Executive Officer. It is a space for information feedback and exchange between the department directors and for decision-making on subjects of common interest or by department.



**Eléonore
MOREL**

Chief Executive
Officer

EXECUTIVE OFFICE



**Juliane
FALLOUX**

Deputy Chief
Executive Officer



**Cyril
BLIN**

Director
Operations &
Programmes



**Patricia
HUYGHEBAERT**

Deputy Director
Operations &
Programmes



**Antoine
MADELIN**

International
Advocacy
Director



**Julie
PÊCHEUR**

Communication
Director



**Juan
TALLEDO**

Administrative &
Finance Director



**Laurence
BURCKEL**

Development
and Partnerships
Director

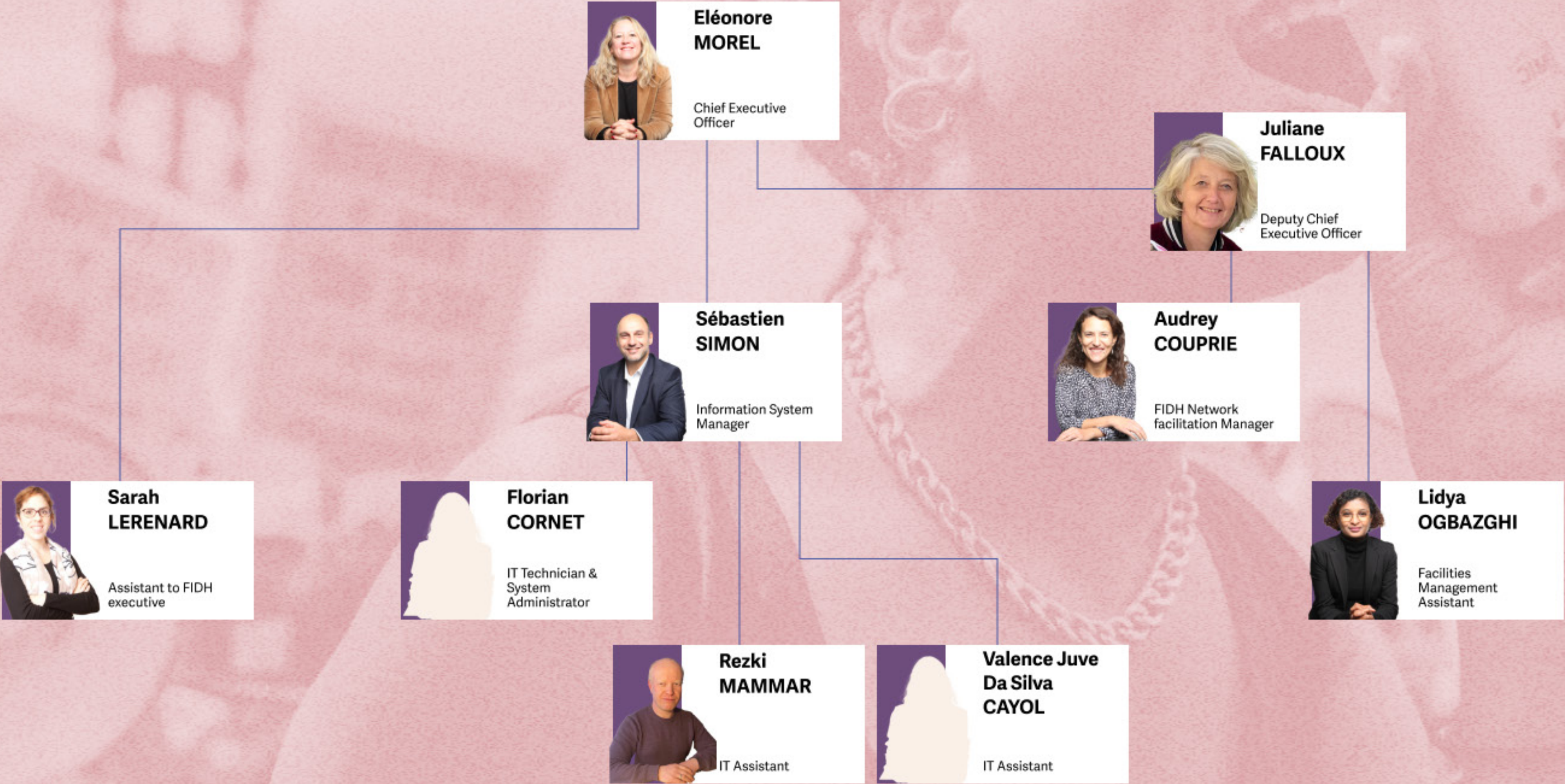


**Sandrine
MAHIER**

Human Resources
Director

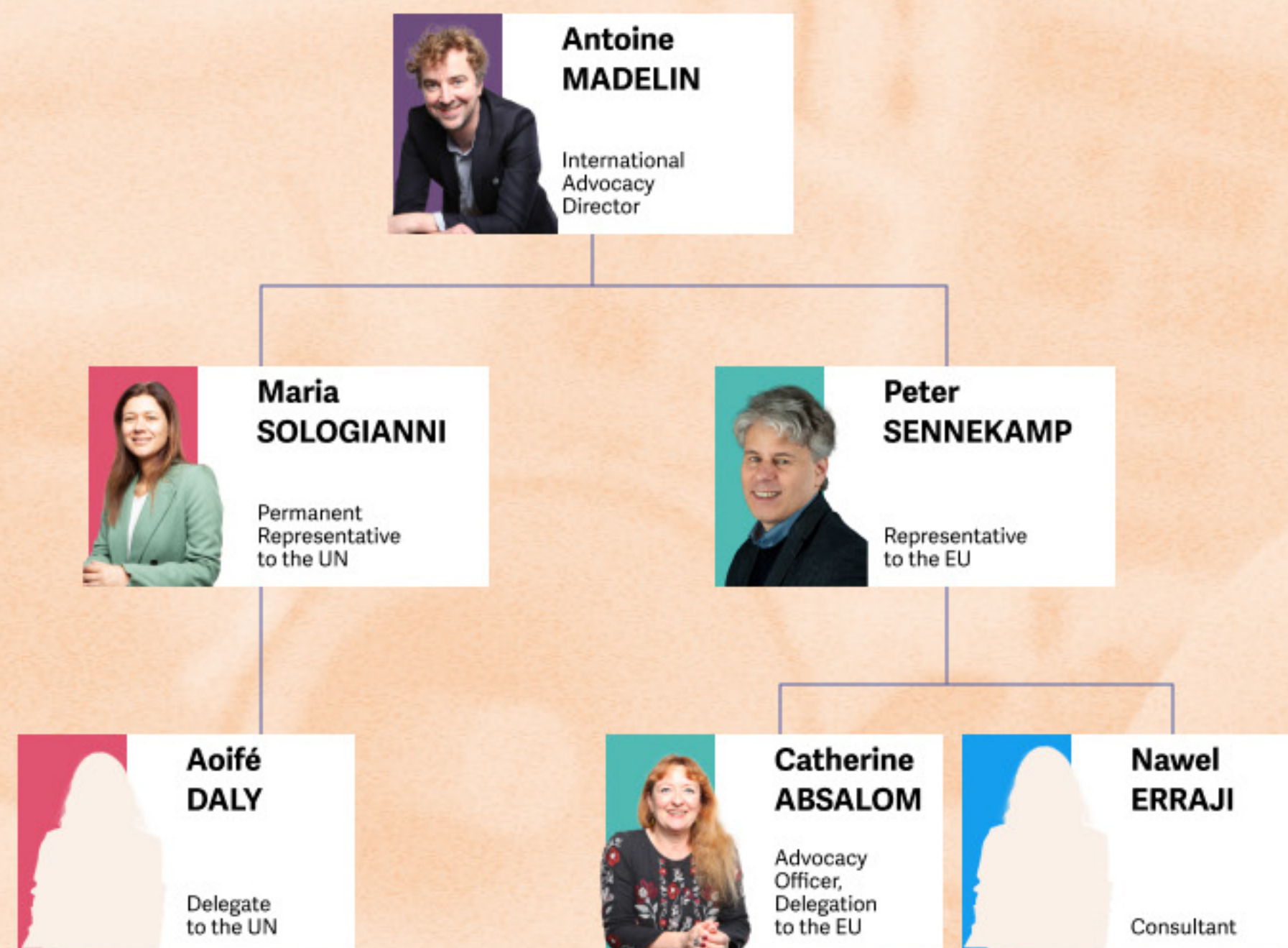
EXECUTIVE OFFICE

The Executive Office is responsible for implementing the strategy defined by the International Board. This includes steering the operational, financial, human and technical development of the International Secretariat, managing relations with member organizations and supporting governance in its operations and strategic thinking.



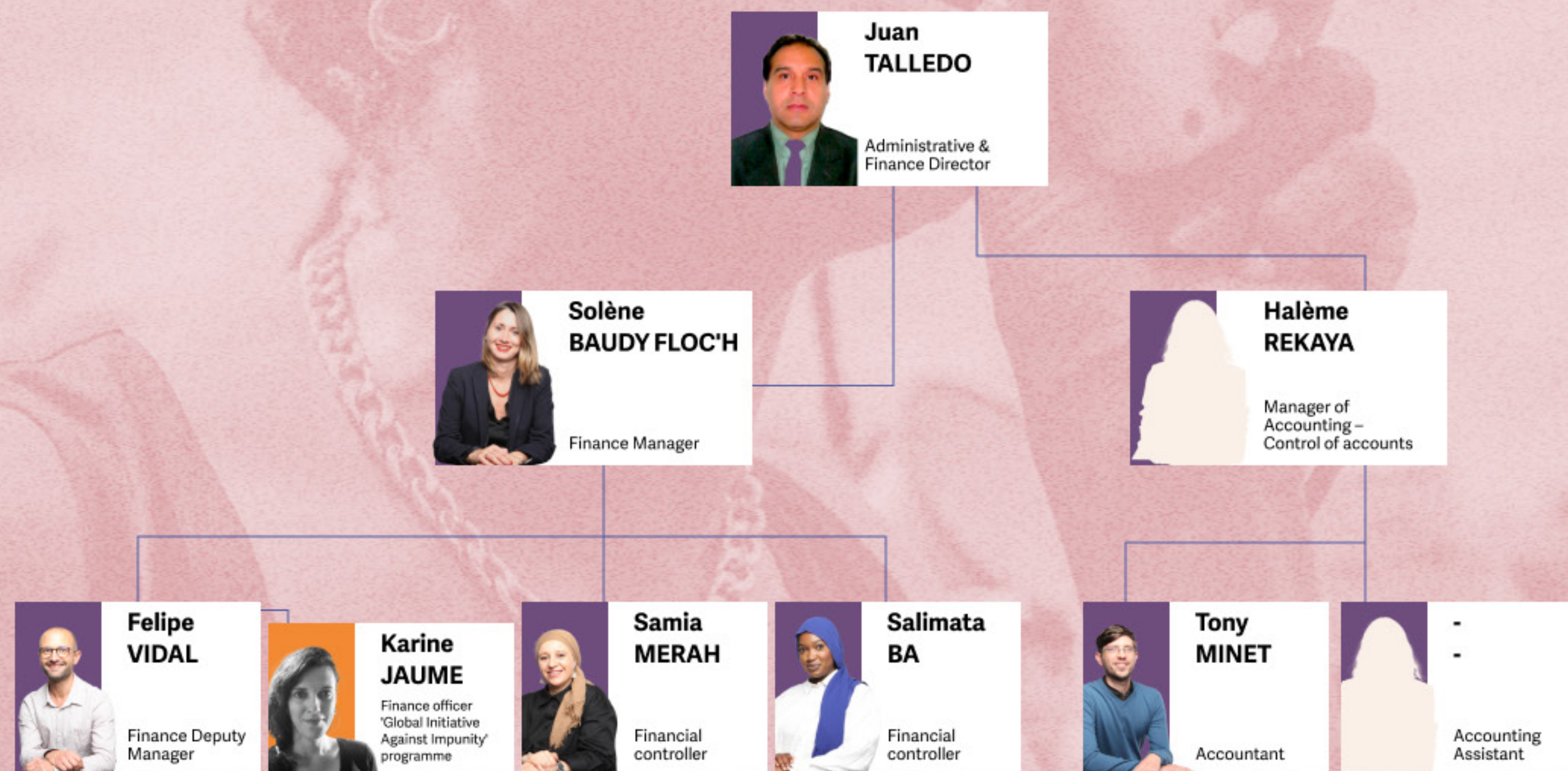
ADVOCACY

The Advocacy Department brings together FIDH's representations to the European Union in Brussels and the United Nations in Geneva and coordinates advocacy at the operational and program levels.



ADMINISTRATION AND FINANCES

The administration and finance department includes the accounting and financial control of FIDH and its programs.



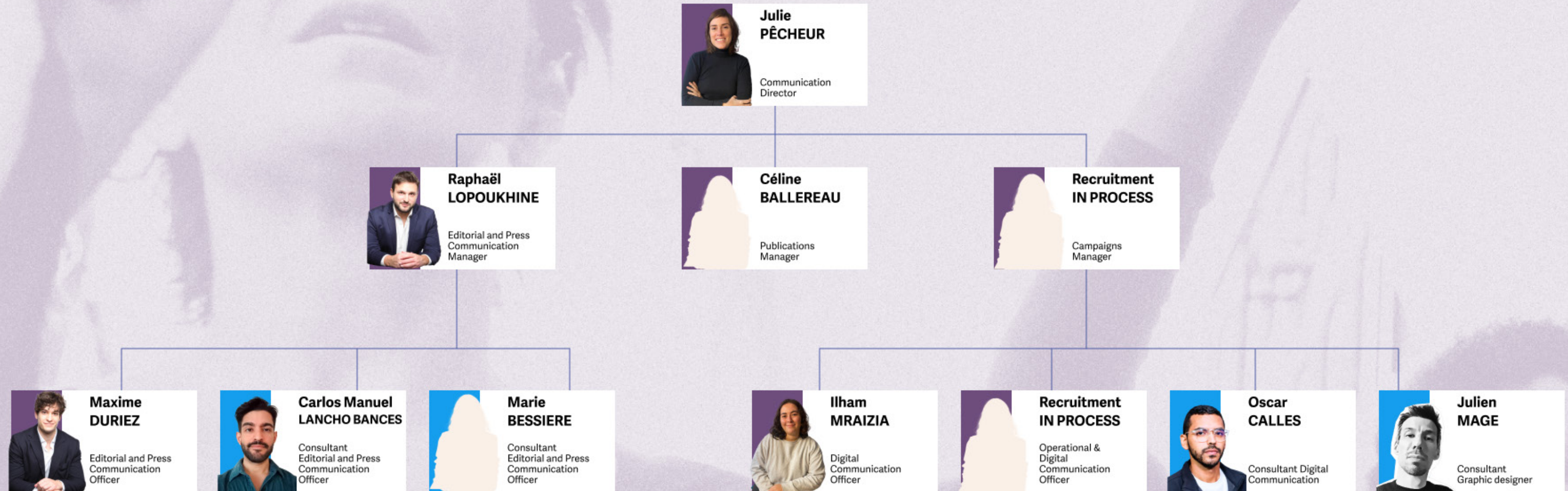
- PARIS
- BRUSSELS
- GENEVA
- THE HAGUE
- CONSULTANT

fidh

INTERNATIONAL SECRETARIAT

COMMUNICATION

The mission of the Communication Department is to highlight the activities and progress of the FIDH and thus strengthen its image.



● PARIS
● CONSULTANT

fidh

INTERNATIONAL SECRETARIAT

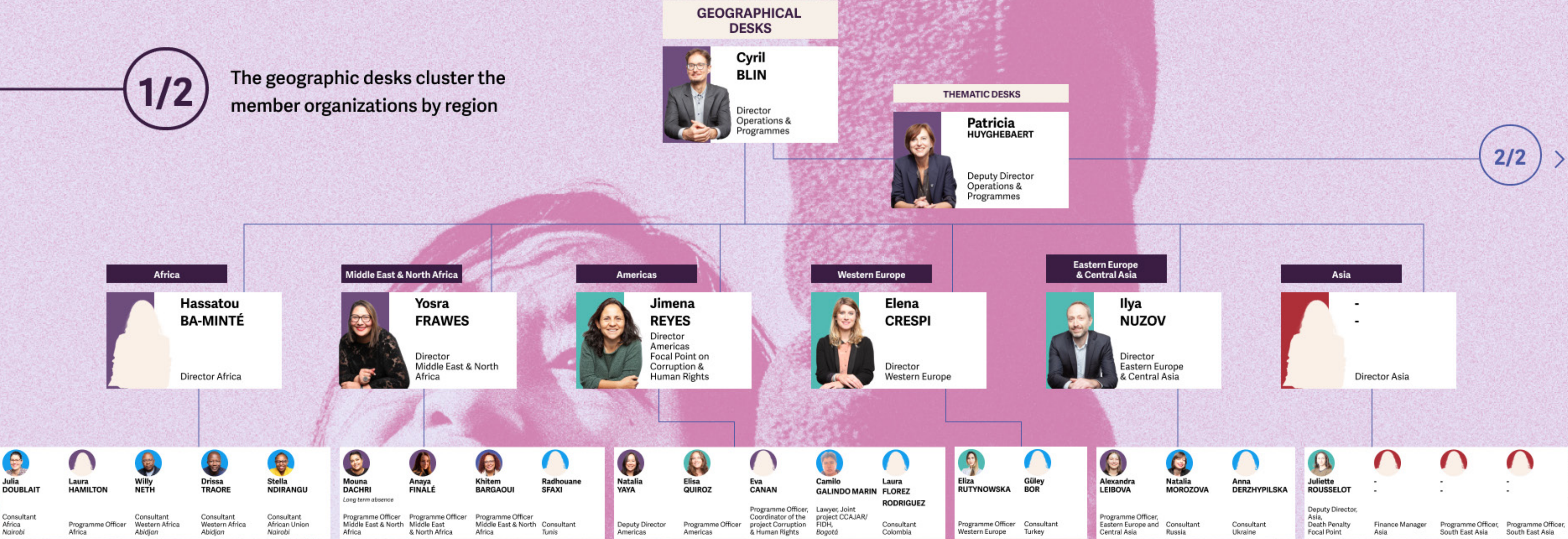
OPERATIONS AND PROGRAMMES

The Operations and Programmes Department is composed of geographic and thematic offices that are responsible for the implementation of FIDH activities (missions, surveys, advocacy, solidarity, reports, seminars, etc.). These offices are made up of experts who are in direct contact with member organizations and partners.

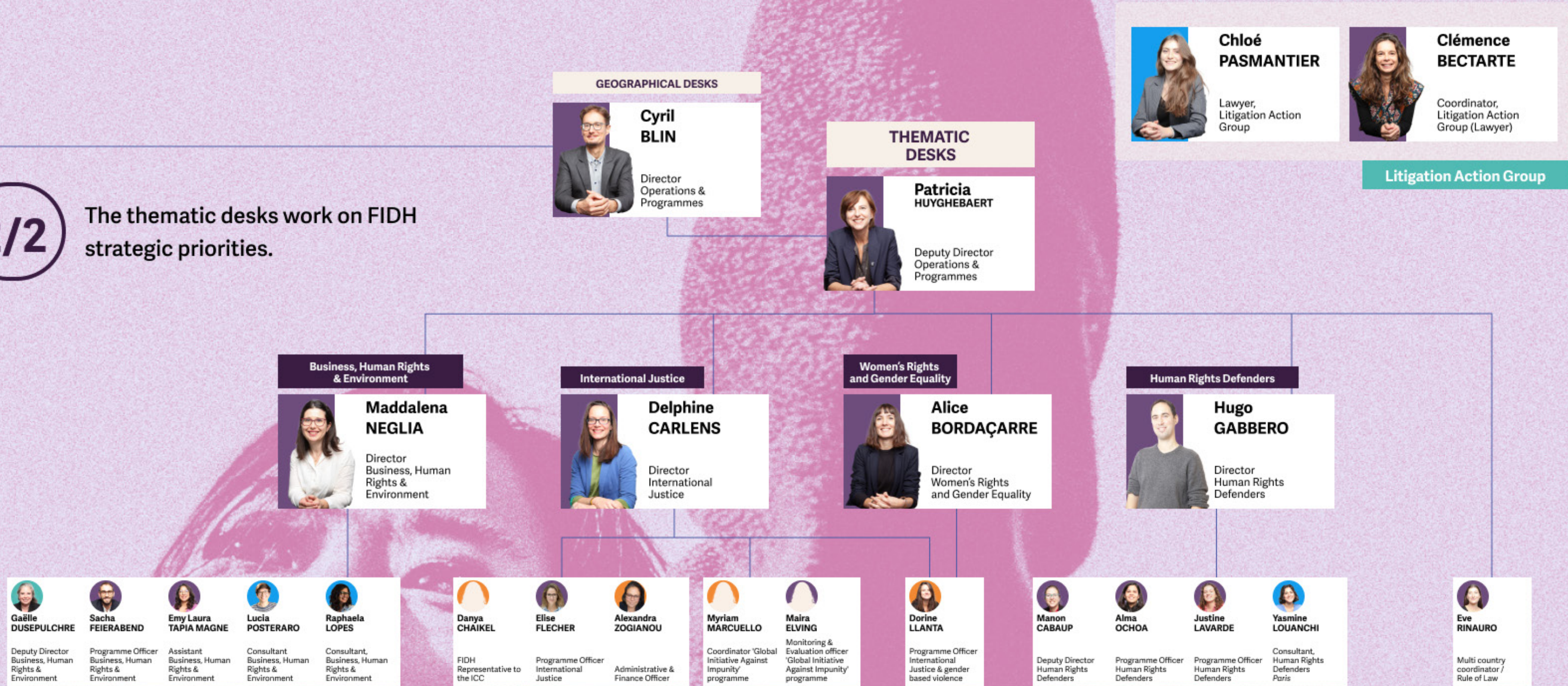
1/2

The geographic desks cluster the member organizations by region

2/2 >

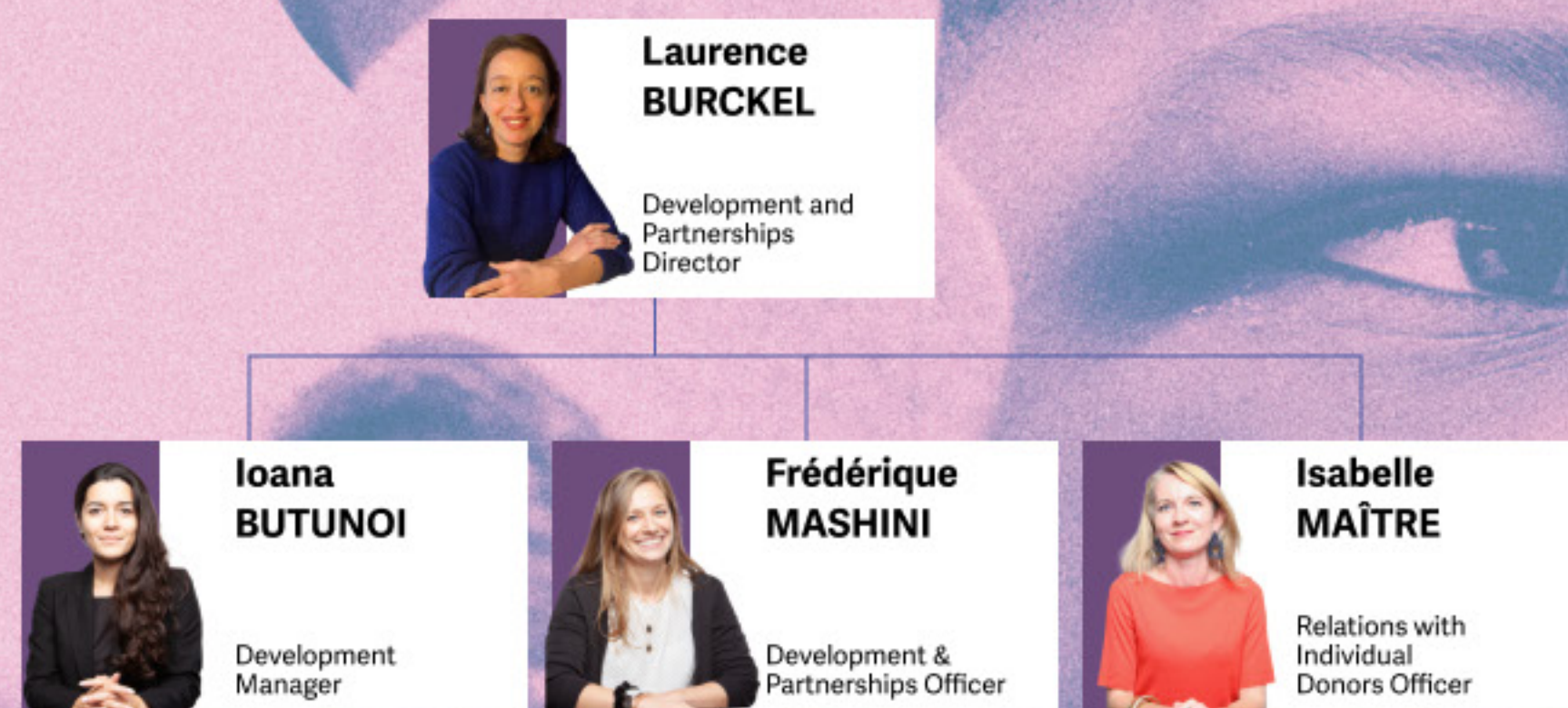


The thematic desks work on FIDH strategic priorities.



DEVELOPMENT AND PARTNERSHIPS

The Development and Partnerships department manages relations with institutional and private donors and with FIDH's individual donors.



HUMAN RESOURCES

The human resources department deals with contracts, payroll, development of employees' skills and ensures their well-being at work.

